

亚洲矿业

Your gateway to Asia 通往亚洲的大门

The

ASIA Miner www.asiaminer.com

Asia Pacific's bi-lingual Resource Industry Magazine 亚太双语资源产业杂志

November/ December 2010 | Volume 6 | Issue 6 | Industry Technical Information | 矿业技术信息

CHINA IN THE DRIVING SEAT

中国带动全球经济

Strength in Rare Earths • Underground Coal Mining • Crusher Technology

稀土走强 • 地下开采煤矿 • 破碎机技术



Before you decide on conveyor drives, take a look at how more than 2500 CSTs on above- and below-ground conveyors around the world, start, stop and drive today...

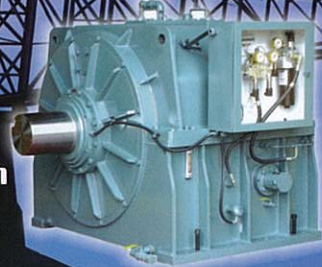
...smart ideas in motion...



BALDOR



Controlled Start Transmission



ISAMILLS MOVE INTO SOUTH AMERICA

XSTRATA Technology's IsaMills are established at various mining operations throughout Asia, Australia and Europe as well as in North and Central America but are now moving into South America.

Xstrata Copper's new Antapaccay project in southern Peru will use IsaMill technology in its regrind circuit

Antapaccay is a major long-life, low cost brownfield expansion of the existing Tintaya copper mine operated by Xstrata Copper.

Xstrata Technology's operations manager - mineral processing Stephen Smith says the IsaMills were selected after rigorous comparisons of a variety of regrind equipment by Xstrata Copper. However, after Xstrata Copper's assessment, the energy efficiency of the IsaMill was one of the key factors in their selection, and important in a region such as southern Peru, where power costs are high.

Two M3000 IsaMills will be part of the copper regrind section, where product sizing less than 40 micron is required. The mills will be powered by 1500 kW (2000 hp) motors and will come complete with the entire regrind plant design and supply, including feed and discharge hoppers and surrounding steel work, as well as the recently released IsaCharger media addition system. Ceramic media will be used in the mills.

The planned commissioning of the mills will be in the second half of 2012 and Karina Arburo, from Xstrata Technology's Santiago office says, "This is a very important IsaMill installation for Xstrata Technology, as it will be the first in South America.

"This region is significant for future copper production and the IsaMill offers a lot of op-

portunities for producers to produce quality concentrate at much lower power input than other traditional grinding technologies. In addition, producers can gain increased copper recovery with the inert grinding environment benefits of the IsaMill to the downstream flotation process."

The IsaMills will be designed and managed by Xstrata Technology's Vancouver office, as well as being supported during the project stage and commissioning by the Santiago office.

Other recently announced projects using IsaMills are the Endako project in Canada, where 3 x M1000 IsaMills will form part of the regrind circuit for molybdenum processing, as well as a M100 (75 kW) unit being installed by Exportadora Aurifera in a gold mine in Ecuador.

Xstrata Copper has also recently purchased a M10,000 (3000 kW) IsaMill for the Ernest Henry magnetite/copper project in Australia while the technology is also used at PanAust's Phu Kham copper-gold operations in Laos and OZ Minerals Prominent Hill in Australia.

IsaMill technology is becoming a standard for regrinding copper concentrate but also treats other minerals including lead, zinc, gold, molybdenum, PGMs and nickel.

IsaMills技术进军南美洲

斯特拉塔科技公司的IsaMills技术已被广泛应用在亚洲, 澳大利亚和欧洲以及北美和中美洲的矿业领域, 现在正逐渐进入南美洲市场。

斯特拉塔铜业公司在秘鲁南部的Antapaccay新项目将在其再研磨工艺流程中使用IsaMill技术。



An Xstrata Jameson Cell and IsaMill in use at Prominent Hill in Australia.

Antapaccay项目是在斯特拉塔铜业公司经营的Tintaya铜矿基础上的大型改建项目, 矿山服务年限长、成本低。斯特拉塔技术公司的矿物加工部门业务经理Stephen Smith说, 斯特拉塔铜业是在经过对各种再研磨设备的慎重比较后最终选择了IsaMills。然而, 斯特拉塔铜业公司评估工作中IsaMill的能源效率优势是其得以入选的关键因素之一, 尤其在例如秘鲁南部的类似地区这一点极为重要, 因为这些地方电力成本很高。

Airborne & Ground Geophysics

**AEROMAGNETICS
RADIOMETRICS
X-TEM HELI TDEM**

GPX SURVEYS

Greg Reudavey or Katherine McKenna
T +61 8 9477 5111 F +61 8 9477 5211
info@gpxsurveys.com.au

LOGANTEK

Geophysical surveys and consulting for target generation.

Commodities include Cu, Au, Fe, Ni, Pb, Zn, Coal and U

www.logantek.com or email info@logantek.com

两台M3000型的IsaMills磨机将作为铜再研磨流程的一部分，产品粒径要求小于40微米。该磨机将采用1500千瓦（2000马力）发动机驱动，与整个再研磨厂的设计和设一起整体供货，包括进料和放料斗及周边钢结构，以及最近发布的IsaCharger介质添加系统。该磨机将采用陶瓷介质。

该工厂计划将在2012年下半年进行调试，斯特拉塔技术公司的驻圣地亚哥办事处的Karina Arburo说：“对于斯特拉塔技术公司而言，这是一个非常重要的IsaMill技术应用，因为这将是南美洲的第一个。

“这个地区将是未来的重要铜产区，IsaMill技术为生生产者提供了在远低于其他传统研磨技术电能输入条件下产出高质量精矿产品的无限可能。此外，通过IsaMill的研磨环境性优势，生产者可在下游浮选工艺获得更高铜回收率。”

该IsaMills设施将由斯特拉塔技术公司驻温哥华办事处进行设计和管理，在项目施工和调试阶段也将获得圣地亚哥办事处的技术支持。

其他新近披露的IsaMills项目应用是在加拿大的Endako项目，3台M1000型号IsaMills磨机将构成钼矿处理流程的重要组成部分，此外Exportadora Aurifera公司购置了一套M100型号（75千瓦）单元，将被安装在厄瓜多尔的一个金矿。

斯特拉塔铜业公司最近还为位于澳大利亚的Ernest Henry磁铁矿/铜矿项目购买了一台M10000型（3000千瓦）IsaMill磨机，还有PanAust公司位于老挝的Phu Kham铜金矿以及OZ Minerals公司位于澳大利亚的Prominent Hill项目。

IsaMill技术正在成为铜精矿磨矿技术的标准配置，该技术也可处理铅、锌、金、钨、镍和铂族金属等其他矿产品。

Panalpina Awarded Airfreight Contract

THE Panalpina Group has recently renewed an airfreight business contract to export and import business to and from Hong Kong, Shanghai and Taipei.

The contract with HTC Taiwan adds to Panalpina's growing list of clients in a wide range of industries, including mining and mining equipment, automotive, oil and gas, and special projects transport.

It is the second successive year that Panalpina has secured the mobile business from HTC Taiwan and represents an increase in shipping destinations over the previous year's contract. Panalpina will transport HTC airfreight to and from countries in Asia, Africa, Europe and North and South America.

Panalpina's logistics experience, its well-es-

tablished relationship with carriers and its mobility and flexibility in shipment handling were recognized by HTC in its decision to extend its contract.

Meanwhile, Chiyoda Corporation, Japan's leading engineering and construction firm, has selected Panalpina's project division Panprojects to provide off-shore transport for about 50,000 freight tonnes of cargo from Europe and the USA for the construction of a coker unit as part of the Jubail Export Refinery Project.

The project is planned for completion at the end of 2012. Panprojects will provide dedicated resources in both its Bremen, Germany and Tokyo, Japan offices as well as on site in the Chiyoda offices to ensure seamless service for the duration of the project.

Another division, Panalpina World Transport, has inaugurated a dedicated logistics facility for the oil and gas industry in Singapore.

The new built-to-suit oil and gas complex offers 1100 square metres of office space, a 7000 square metres covered warehouse and 14,000 square metres of open yard space. The facility also enjoys close proximity of the base jetty providing natural deep water conditions that facilitate the handling of floating

A POPULAR CHOICE IN MINING & MINERALS PROCESSING



FIG 770
Ported
Gate Valve

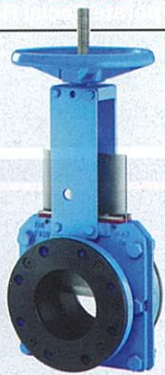


FIG 760
Slurry-Max
Slurry Valve

**PREMIUM
BI-DIRECTIONAL
KNIFE-GATE &
SLURRY
GATE VALVES
for abrasive
and corrosive
applications.**

VAAS
MINING GROUP

VAAS Head Office:
Tel: +91 44 4228 9500 / E-mail: sales@vaasval.com
VAAS Pacific:
Tel: +61 3 9544 8643 / E-mail: vaaspacific@vaasval.com

Americas • Asia • Europe • Pacific

www.mhe-demag.com

Has Your OVERHEAD CRANE caused Unplanned Downtime?

MHE-Demag is the leading provider of material handling equipment and solutions in South East Asia.

Responsible for over 17,000 crane installations in the region, MHE-Demag draws on its wealth of resources to provide you with first-class design, manufacturing, project implementation and comprehensive service support.

With a core of well-trained engineering staff, MHE Service provides a wide spectrum of product support services for all brands in routine servicing, repair, modernisation and refurbishment.

mhe DEMAG

Call or email Steve Grant @ (65) 8223 5715, mines_mhe@mhe-demag.com

